

## Features

Compact design saves on precious panel space.

High current contacts can switch up to 480VA @ 240 VAC.

Screw terminals eliminate messy pigtail connections.

Requires no external power because power is induced from the motor conductor.

Made in the USA and backed with a two year warranty.



**Motorsaver**  
THREE-PHASE ELECTRIC  
MOTOR PROTECTOR

## Model LSR-0 Load Sensor

Engineered  
Protection

•  
Ideal for HVAC  
and Refrigeration

### Features:

- CSA and CSA-NRTL/C
- 2 year Warranty
- Made in USA
- Standard surface mount
- Screw Terminal Connection

**Model LSR-0** is a preset load sensor designed to switch whenever 15A is present and drop out at 2.5A. The LSR-0 is used commonly as lockout protection on oil pressure controls due to compressor overload shutdown. It can also be used to interlock fans, compressors, and motors; to indicate equipment status such as feed rates, tool wear, loss of prime on pumps, mixer viscosity, and all types of over and under load conditions, or to stage pump motors, chillers, and other machinery.

This device combines a current transformer (CT), transducer, and high current output relay together to switch alarm circuits, contactors, or most resistive or inductive loads. The LSR-0 can perform the function of an auxiliary contact, yet has the advantages of universal application and isolation.

# Motorsaver<sup>®</sup>

THREE-PHASE ELECTRIC MOTOR PROTECTOR

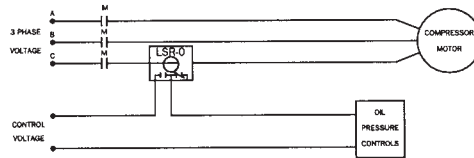
## Model LSR-0

Specifications

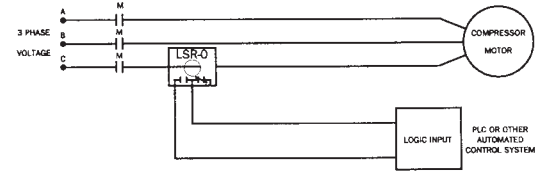
Operating Points

Special Options

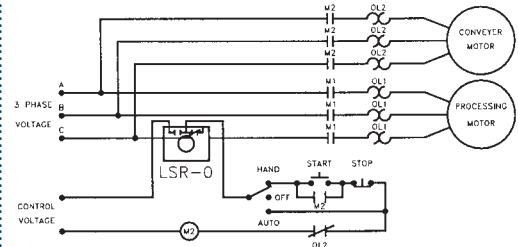
TYPICAL WIRING DIAGRAM FOR A MODEL LSR-0 FOR REFRIGERATION AND OIL FAILURE CONTROL



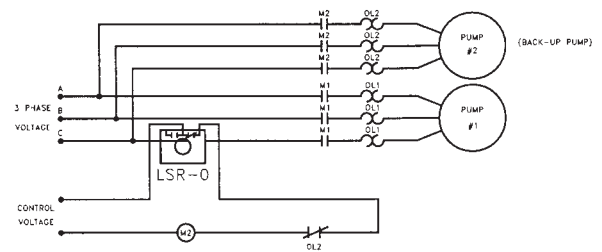
TYPICAL WIRING DIAGRAM FOR A MODEL LSR-0 FOR BUILDING AUTOMATION



TYPICAL WIRING DIAGRAM FOR A MODEL LSR-0 FOR A CONVEYER SYSTEM



TYPICAL WIRING DIAGRAM FOR A MODEL LSR-0 FOR A DUPLEX PUMP SYSTEM



### Specifications

- Amperage Ratings .....135A MAX Continuous
  - Turn-on Threshold .....Fixed, 15A (max)\*
  - Turn-off Threshold .....2.5 Amps (min)
  - Power .....Induced from conductor
  - Isolation .....600 VAC rms
  - Relay Output Rating .....480 VA @ 240 VAC
- Caution: This product should not be relied upon solely in life or safety applications.  
\*Conductors may be looped for smaller motor applications.

### Ordering Information

Model #	Amperage Range	Output Rating	Trip Point	Trip Point Adj.	Output Status LED	Sensor Power LED	Relay Status LED
LSR-0	0-135A	480VA@240VAC	Induced	No	No	No	NO

SymCom warrants its microprocessor based products against defects in material or workmanship for a period of five (5) years from the date of manufacture. All other products manufactured by SymCom shall be warranted against defects in material and workmanship for a period of two (2) years from the date of manufacture. For complete information on warranty, liability, terms, returns, and cancellations, please refer to the SymCom Terms and Conditions of Sale document.

